

# RHEOTHERM<sup>®</sup> FLOW INSTRUMENTS

## for Low Flow, High Pressure Applications (up to 10,000 psi)

Consisting of FM approved flow sensing transducer, separate electronics package, and armored interconnect cable

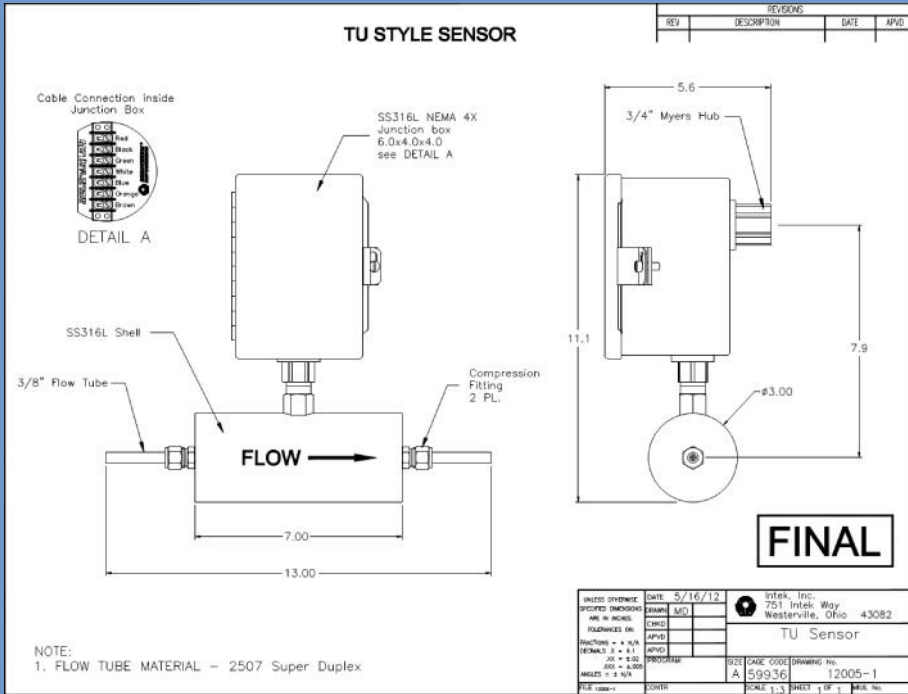
<b>Flow Data</b>	
<b>Fluid:</b>	Scale Inhibitor
<b>Customer Line Size:</b>	3/8-inch
<b>Customer Flow Range:</b>	0.11-0.7 gph
<b>Calibrated Flow Range:</b>	0.099-1.05 gph
<b>Temperature – Max:</b>	150°F
<b>Temperature – Operating Range:</b>	32°F to 150°F
<b>Pressure - Max</b>	10,000 psig
<b>Pressure – Operating Range</b>	5,750-9,600 psig
<b>Viscosity</b>	-
<b>Specific Gravity</b>	1.2
<b>Instrument Data</b>	
<b>Transducer Type:</b>	TU
<b>Wetted material:</b>	2507 Super Duplex
<b>Shell Material:</b>	316L Stainless Steel
<b>Fittings:</b>	3/8-inch tube stubs
<b>Local Display:</b>	2x16 character LCD with Flow Rate, Totalizer, and Fluid Temperature
<b>Calibration Units:</b>	gph
<b>Output(s):</b>	Linear 4 to 20 mA with HART
<b>Input Power:</b>	24 Vdc
<b>Electronics Enclosure:</b>	NEMA 7
<b>Armored Cable Length:</b>	up to 200 ft available
<b>Notes</b>	
1.	The sensor and electronics listed above are approved for use in Class I Div.I Grps B, C, D areas.
2.	The user is responsible for the selection of process-wetted materials in view of their corrosion resistance. Intek, Inc. makes no guarantees and assumes no liability for the corrosion resistance of the materials selected here for the application described above.



- **No moving parts**
- **Choice of wetted materials**
- **Advanced signal processing electronics**
- **Field adjustable**
- **Maintenance-free**
- **Long-term reliability**
- **Easy installation**

- Extended temperature compensation for reliable flow measurement over wide range of process conditions
- Each explosion proof enclosure can support up to 4 transmitters and flow sensors
- Up to 4 calibration settings to support different fluids or flow ranges
- Factory calibration is field adjustable as process changes to reduce need for recalibrations
- Variety of process connections and component configurations available simplifies integration
- Proprietary design using unstressed components providing years of reliable operation and reduced maintenance cost.
- Designed and manufactured under ISO-9001:2008 certified Quality Assurance program for maximum reliability
- FM approved, explosion-proof, and radiation hardened units available to meet the most demanding applications

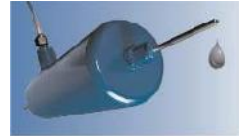
# Rheotherm® Flow Meter



Rheotherm flow meters are precisely calibrated at INTEK's calibration laboratory. The measurement method ensures unparalleled accuracy at both the high and low ends of the calibrated flow range.

## Inline Sensors

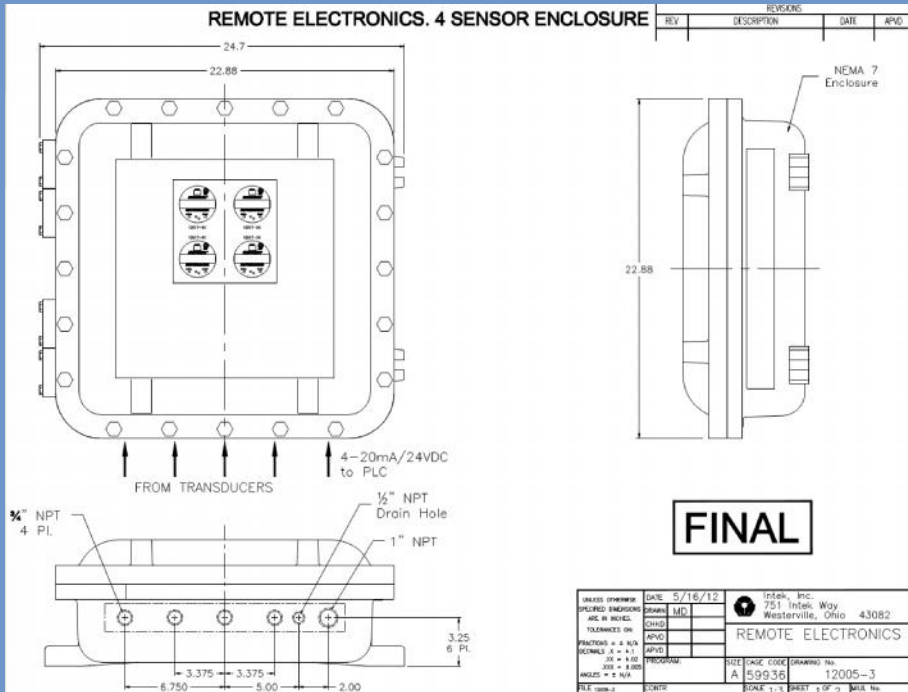
The inline sensor has an unobstructed flow tube for minimal pressure drop.



Whether employed in precision laboratories, harsh plant environments or the operating extremes of space flight, INTEK's inline sensors have a reliable, time-tested design appropriate to the application.

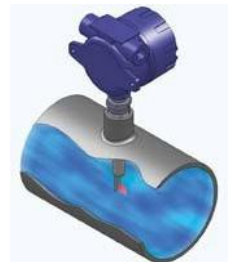
The standard 316 stainless steel wetted tube is compatible with most liquids and gases. For more aggressive fluids, other alloys and metals are available.

The sensor design allows for chemical or steam sterilization in place. Electropolished tubes can be specified for high purity applications.



## Insertion Probes

Rheotherm insertion probe sensors provide reliable flow monitoring in 1" or larger pipes and ducts. They are used for measurement of mass or standard volumetric gas flow rates, as well as for highly reliable flow switch protection in liquid or gas service. The one-piece sensor easily installs through a threaded, flanged, or hot tap coupling.



For assistance with any flow application, contact an application engineer at INTEK, the leader in precision thermal flow metering. Call 888-LOW FLOW (569-3569).



**INTEK, INC.**

751 Intek Way  
Westerville, OH 43082-9057  
Phone: 614-895-0301  
Fax: 614-895-0319  
sales@intekflow.com  
www.intekflow.com